

Early Start CT

Local Governance Partners (LGP) and Intermediary Overview

5/20/2025



Office of Early Childhood

Agenda

- Welcome [5 min]
- Early Start CT Context and Overview [20]
- LGP System and Transition Planning Grants [15]
- LGP Intermediary [20]
- Discussion [30]

Leaving today, we hope you all:

1. Walk away with a **more detailed understanding** of the LGP Intermediary and its goals
2. Continue to **share your input** on the LGP system



Early Start CT Context and Overview



Working towards our “north star”

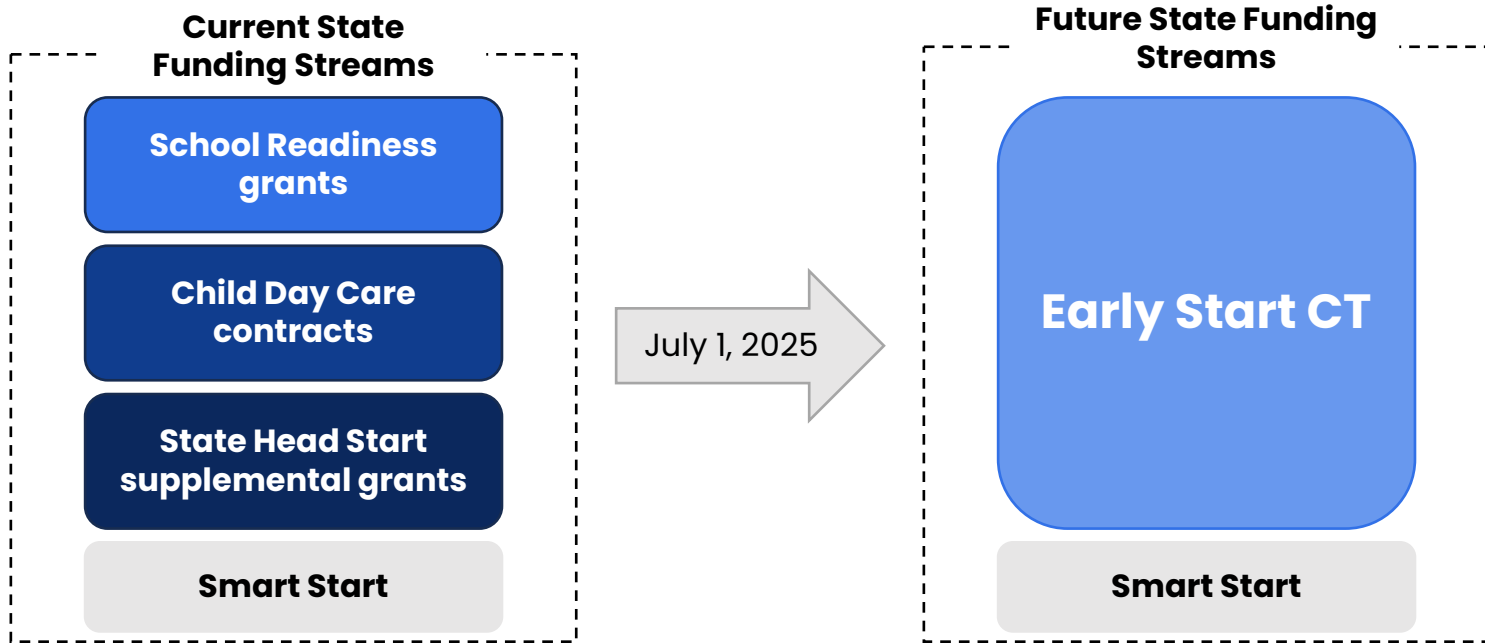
OEC's vision statement

All young children in Connecticut are **safe, healthy, learning, and thriving**. Each child is surrounded by a **strong network** of nurturing adults who deeply value the importance of the first years of a child's life and have the skills, knowledge, support, and passion to meet the unique needs of every child.



What is Early Start CT?

Early Start CT is the new state funding stream that combines the current School Readiness grants, Child Day Care Contracts, and State Head Start supplemental grants; it goes into effect July 2025



Why is the shift to Early Start CT happening now?

Simplifying the state-funded system by creating Early Start CT was a **key recommendation** in the Blue Ribbon Panel's report, based on **extensive feedback** from providers, parents, and advocates

PILLARS OF THE PLAN



SYSTEMS OBJECTIVES AND ACTION STEPS

Objectives

3A

Simplify the state-funded system to better align with federal systems, reduce complexity, and increase utility.

3C

Ensure family and representative community voices are central in the ECE system.

Key Action Steps

Consolidate the state-funded system into one or two funding streams to minimize administrative burdens on programs and simplify parent navigation by SFY2025.

Determine statutory and regulatory changes to support a unified state funding system for the 2024 session.

Significantly reduce the number of state general policy requirements. This may require statutory changes.

Recognize, empower, and embed families as central and valued decision-makers in the development of an equitable ECE system.

Partner with parents as advisors to develop and implement policies at the program, state, and local level to elevate families' diverse perspectives.

Expand local organizational supports and implement a common needs assessment to ensure an equitable and responsive ECE system by SFY2026.

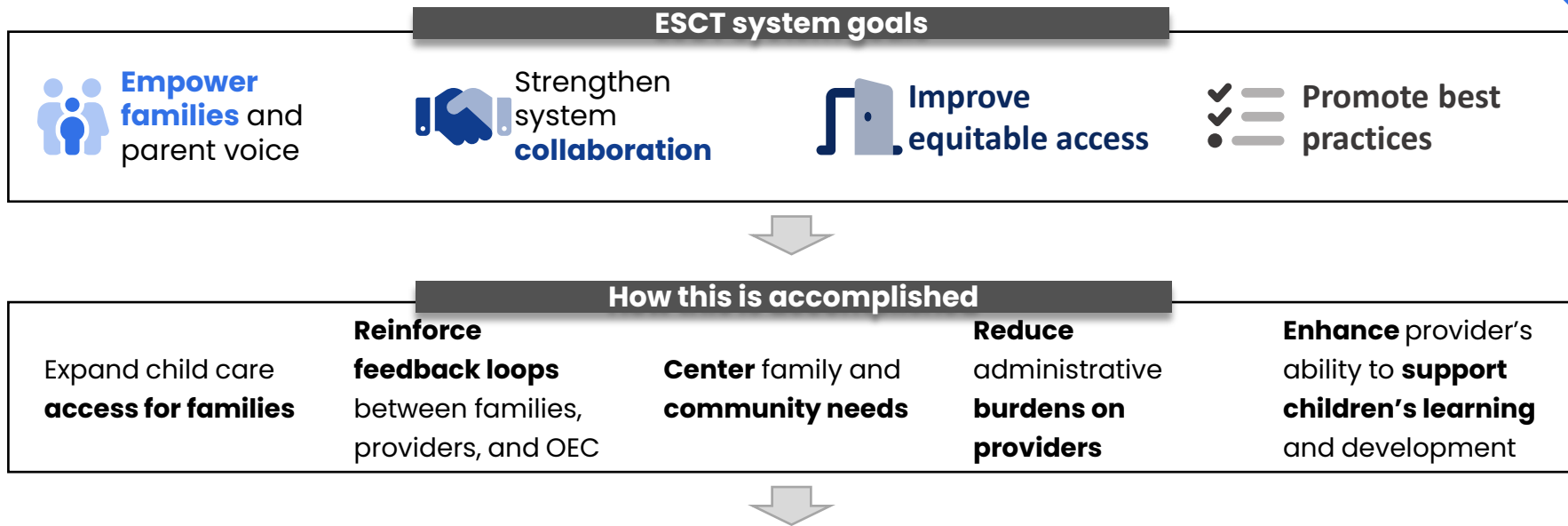
OUTCOMES

Early Start CT

Local
Governance
Partners



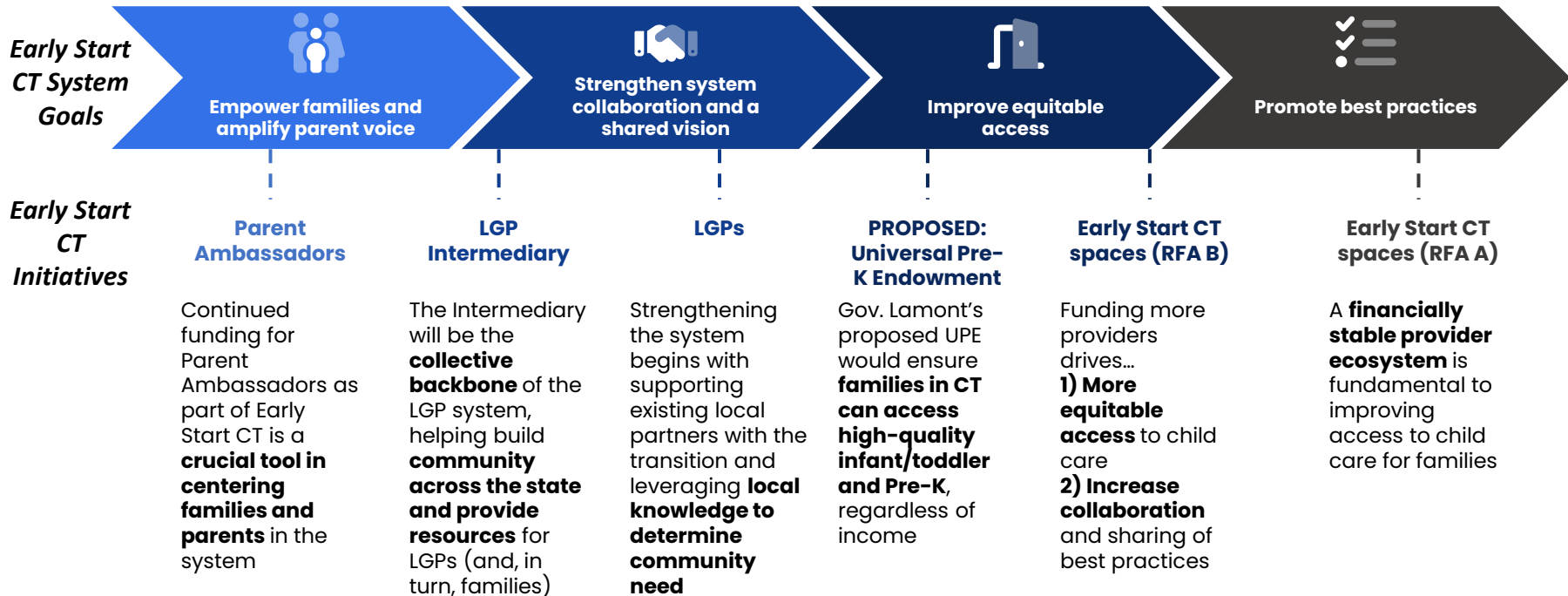
Who does Early Start CT benefit?



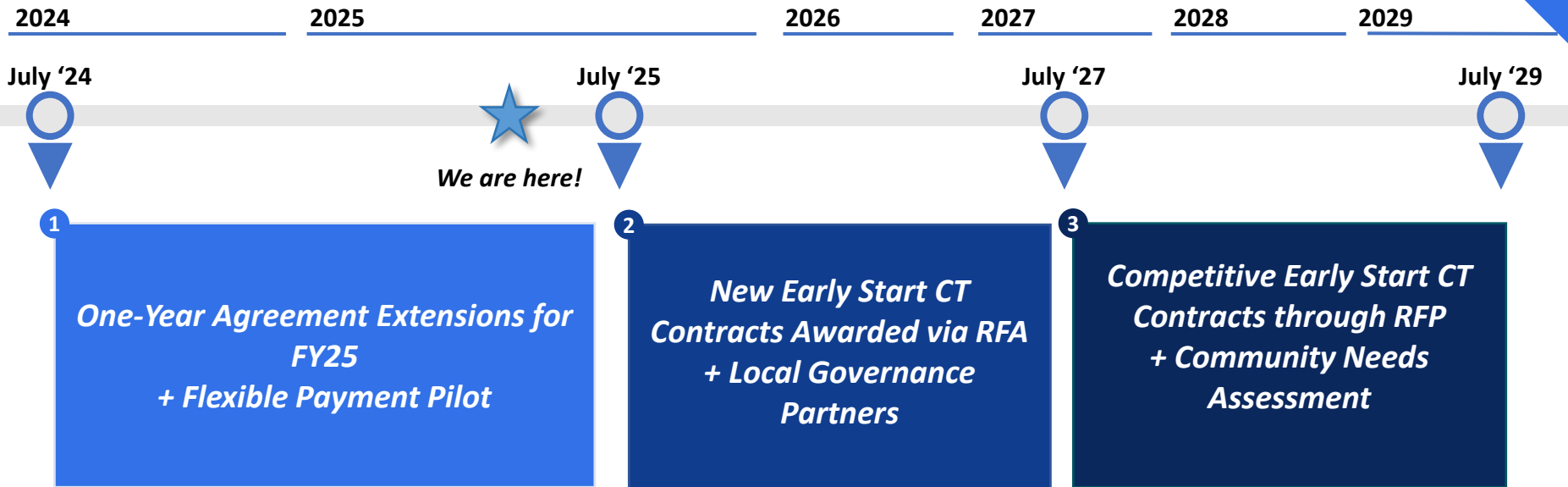
Early Start CT (ESCT) benefits **families, providers, and the broader community**



Early Start CT Initiatives



Early Start CT Timeline

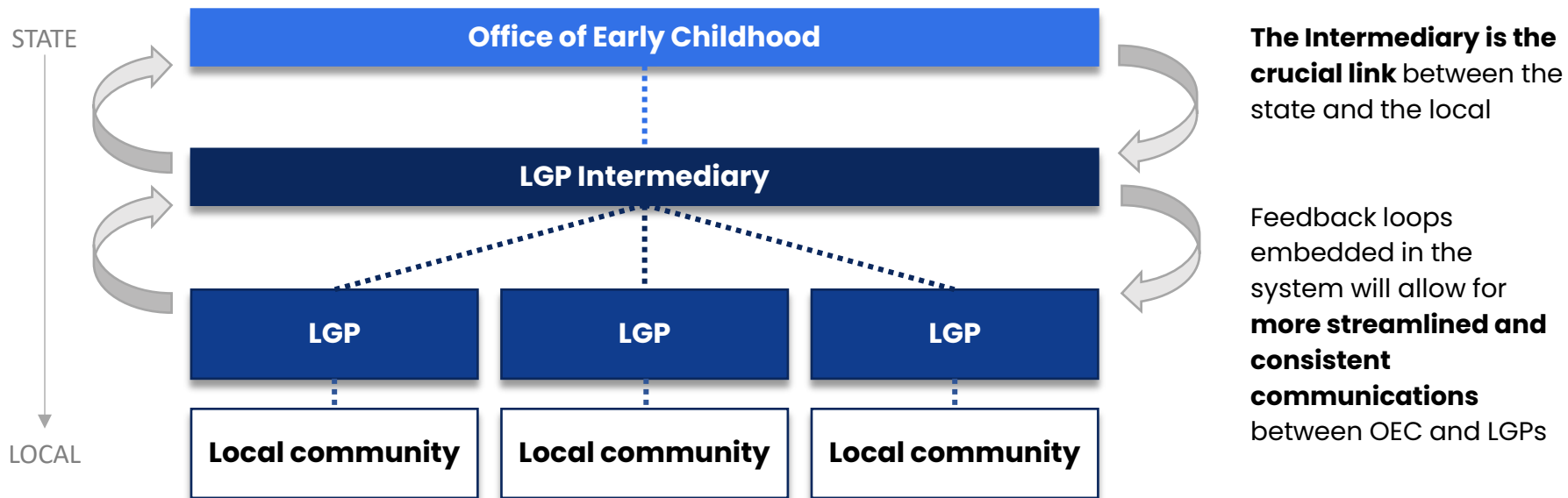


LGP System



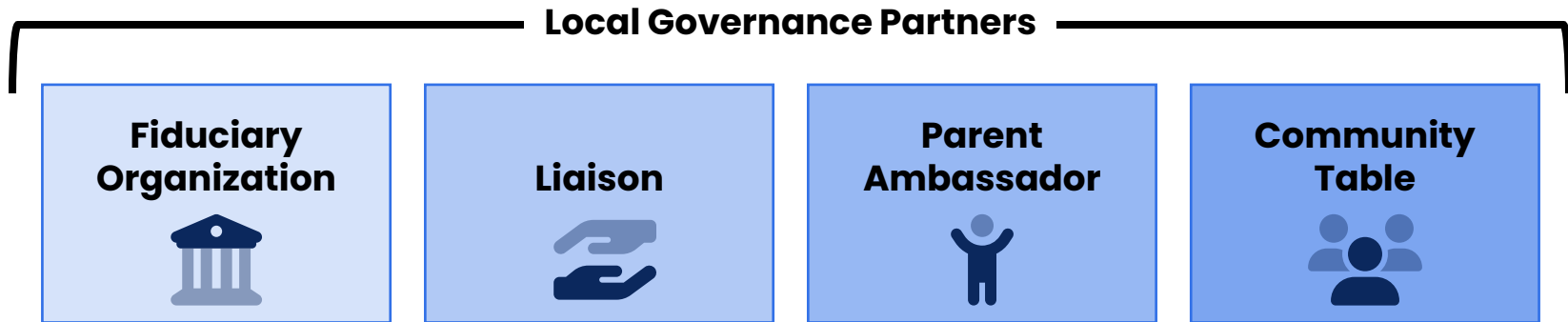
LGP System

The LGP Intermediary is a statewide organization that will provide support to every Local Governance Partner



LGP Structure

This general structure for LGPs outlines the four key pieces that are critical for operations: a fiduciary, a liaison, a parent ambassador, and a local community table



Transition Support Grants



LGP Intermediary



The LGP Intermediary Will...



Contract directly with LGP fiduciaries



Provide support and technical assistance to LGPs



Be present in communities, including regular in-person visits




Manage communication and feedback between OEC and LGPs



Continually iterate and refine service delivery with input from OEC and LGPs



LGP Intermediary and LGP Roles (1/4)

ESCT Goal	LGP Intermediary Vision	LGP Vision
 Empower families and amplify parent voice	<ul style="list-style-type: none">• Facilitate feedback loops between the state and local level• Identify and address system-wide areas of need for effective Parent Ambassador / Parent leader engagement	<ul style="list-style-type: none">• Support local family engagement, including Parent Ambassadors• Facilitate family-oriented programming for the community• Make involvement in LGP Community Table efforts accessible for all families, including engagement at the LGP Community Table• Act as a resource for providing information and referrals to families regarding the early childhood system, and connect families to other OEC initiatives, statewide programs, and community resources



LGP Intermediary and LGP Roles (2/4)




Strengthen system collaboration and a shared vision

ESCT Goal	LGP Intermediary Vision	LGP Vision
	<ul style="list-style-type: none">• Operationalize OEC's system goals and shared vision• Provide direction and guidance to LGPs on standardized statewide outcomes for their work, informed in partnership with OEC• Dedicate time and create processes for knowledge sharing among LGPs statewide• Develop protocols to ensure effective coordination and communication• Support LGPs in building relationships with local community	<ul style="list-style-type: none">• Convene early childhood stakeholders to serve as the LGP Community Table• Build relationships with families and providers• Develop partnerships to provide a range of wraparound supports for providers, families, and children in the community




LGP Intermediary and LGP Roles (3/4)

ESCT Goal	LGP Intermediary Vision	LGP Vision
 Improve equitable access	<ul style="list-style-type: none">• Support LGPs in conducting a data-driven community needs assessment and development of a community plan, and apply learning to local LGP implementation	<ul style="list-style-type: none">• Assess community need formally (i.e., through a community needs assessment developed by OEC) and informally (i.e., through observations) to inform the assignment of child care spaces across a mixed delivery system• Match eligible families to state-funded spaces



LGP Intermediary and LGP Roles (4/4)

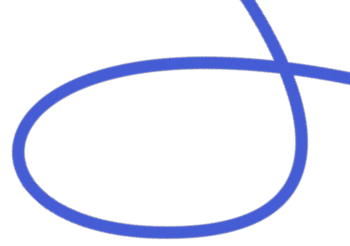
ESCT Goal	LGP Intermediary Vision	LGP Vision
 Promote best practices	<ul style="list-style-type: none">• Communicate standardized expectations of LGPs that allow for local flexibility in practice• Break down OEC General Policies (GPs) for local implementation• Coordinate and host training sessions for statewide audience when appropriate	<ul style="list-style-type: none">• Provide resources and guidance related to evidence-based practices to providers receiving Early Start CT funding• Assess community and individual provider need and connect them to relevant OEC initiatives, including Quality Improvement resources• Promote awareness and usage of professional development opportunity among community providers• Co-sponsor professional development events with OEC• Leverage dedicated Quality Enhancement funds to meet community needs



Shine Early Learning



Shine Early Learning



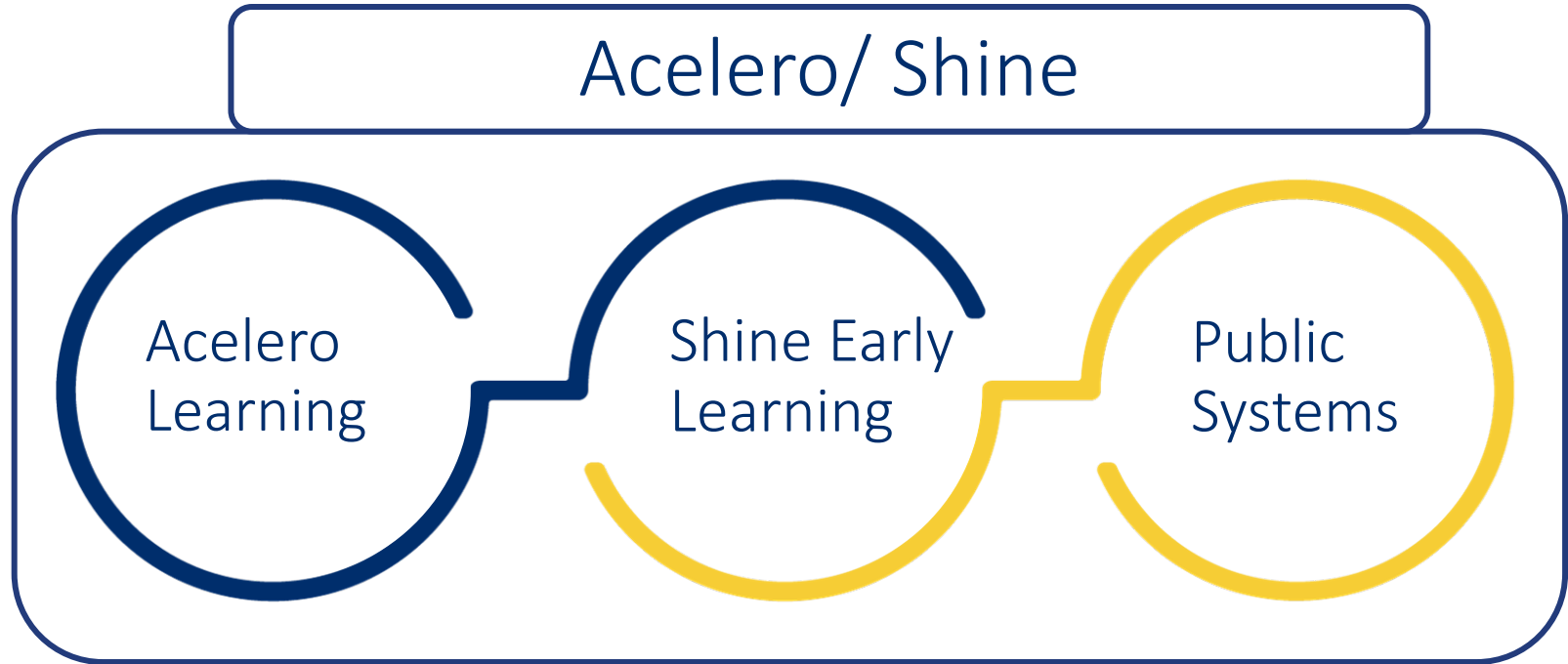
Shine Early Learning increases quality and improves outcomes through:

- the design and implementation of evidence driven, locally relevant solutions;
- dedicated local teams that honor the aspirations and cultures of the communities we serve.

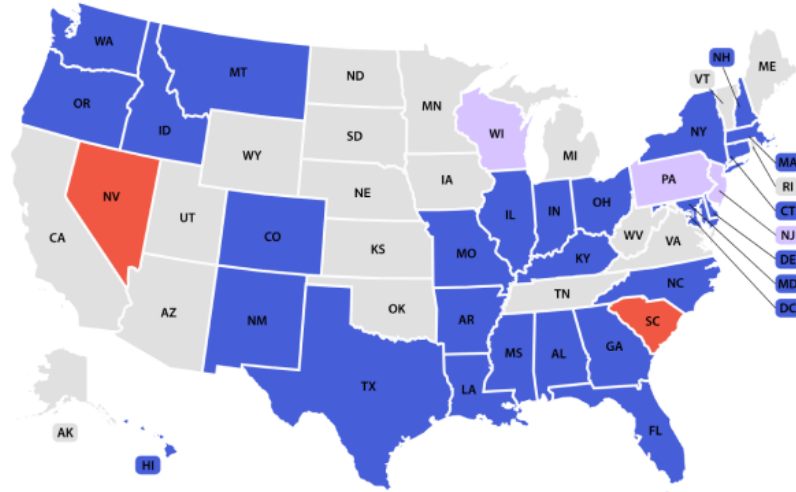
Shine Public Systems works at the intersection of the needs of public systems and early learning providers.

Increased access and quality is achieved by delivering what providers need, when they need it, in the format that works best for them.

Our Organization



About Us: Our National Local Presence



U.S. Territories

American Samoa

Commonwealth of the
Northern Mariana Islands

Guam

Puerto Rico

U.S. Virgin Islands



Acelero Learning



Shine Early Learning



Acelero and Shine

- **Direct Services:** Acelero Learning
- **Shine Network:** Community Organizations & State Systems

Shine Public Systems

QRIS



Network Support



NC DEPARTMENT OF
HEALTH AND
HUMAN SERVICES

Training & Systems Reform



Texas Workforce Commission



Delaware
Department of Education



NC DEPARTMENT OF
HEALTH AND
HUMAN SERVICES

Keys to Impact

- Local presence
- Responsiveness
- Relationship-centered
- Strength based & innovative
- Collaborative
- Data-driven
- Open and transparent communication

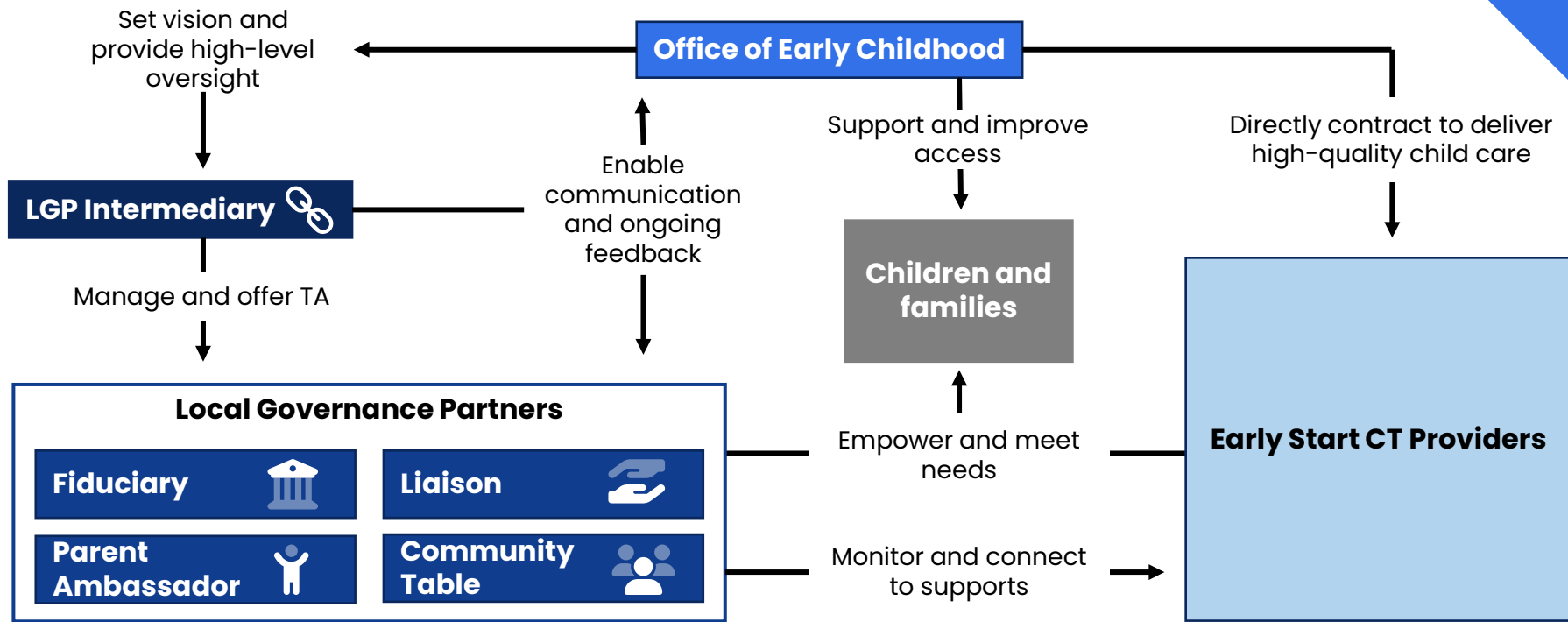
Discussion



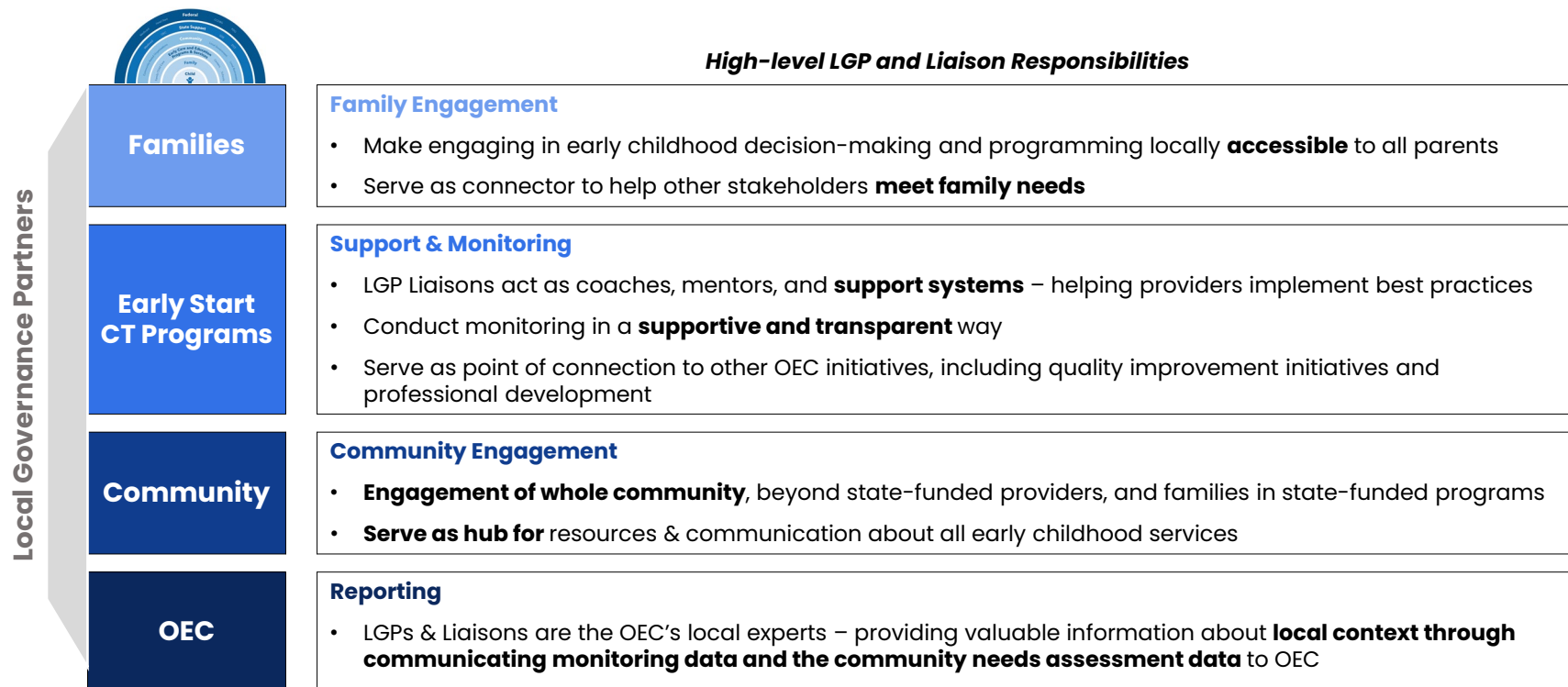
Appendix



Early Start CT System Delivery Model



Local Governance Partners (LGP)



Where are we?

Governor Lamont initiated the Blue Ribbon Panel on Child Care by Executive Order in 2023.

The goal was to develop an equitable, high-quality, and sustainable system that **ensures that every child has a quality educational foundation that will prepare them to grow, learn, and succeed.**

The culmination of over a year of work, **the Blue Ribbon Panel's report incorporates extensive feedback** from Blue Ribbon workgroups, national and local experts, Panel members, and other stakeholders, including providers, parents, businesses, and advocates.

Blue Ribbon Panel Feedback Process

