

State of Connecticut

# Blue Ribbon Panel Workgroup



---

September 2023

# Agenda

1. Blue Ribbon Panel Context
2. Blue Ribbon Panel Draft Outline Review
  - Pillars
  - Goals & Objectives
3. Next Steps

# Blue Ribbon Panel Context

---

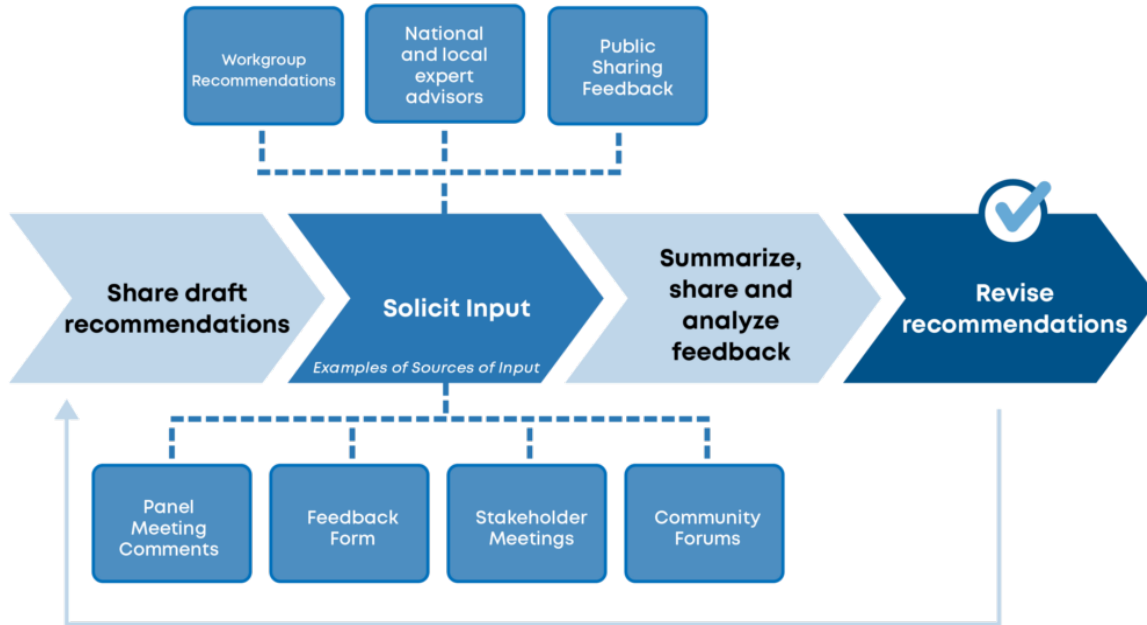
# The Charge to the Blue Ribbon Panel

---



- The Blue Ribbon Panel on Child Care was initiated by Governor Lamont's Executive Order.
- The Panel is charged with developing a strategic plan for a child care system that works for families, providers, and Connecticut's economy.
- The Panel will outline a data-driven, actionable, 5-year strategic plan for Connecticut that supports family needs, business needs, and prioritizes equitable access to early care and education.

# Feedback and Iteration



- The recommendations presented today are the result of **several months of input and iteration** from workgroups, advisors, stakeholder meetings, and public feedback
- The draft outline will be **reviewed and updated by the Blue Ribbon Panel** and used to write the final plan that will be submitted to the Governor

**DRAFT**

# Draft Outline Review

---

## Pillars of the Plan



### EQUITY

Design the future ECE system so that investments and resources provide equitable opportunities for under-resourced families and communities



### QUALITY

Support the development of both programs and providers to ensure all children have access to high-quality ECE



### AFFORDABLE ACCESS

Build the system so that all families have access to affordable high-quality care that meets their specific needs



### PROVIDER AND SYSTEM STABILITY

Support the ECE workforce - the bedrock of a stable and high-quality ECE system. Develop and fund the system for long term strength and stability



### FAMILY AND COMMUNITY VOICE

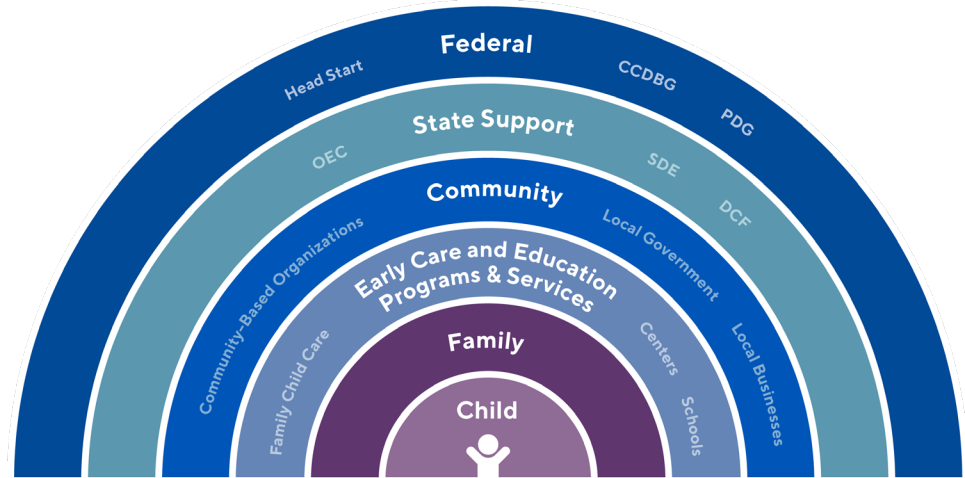
Embed family and local community input into system design to inform decisions. Foster communication and partnership with families, providers, communities, and businesses

# Overarching Vision for the 5-Year Plan

**WHAT:** All families will have access to an **equitable, high-quality, and affordable** early childhood education (ECE) system. Building on investments the State has made, this plan will **center on the needs of children and families**, enabling children to learn and thrive, and families to work.

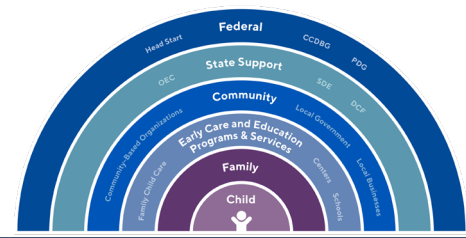
**HOW:** Implemented over 5 years, the plan will **prioritize historically under-resourced groups and communities** and will take care to **honor the existing workforce**.

**WHY:** A strong ECE system will benefit our **communities and economy** by helping to attract and retain young families, increase workforce participation – especially among women, and grow the State's economy.





# The envisioned system aims to benefit families, providers, and communities



<b>Families</b>	<ul style="list-style-type: none"> <li>• More <b>accessible and affordable high-quality child care</b> that meets all families' needs</li> <li>• Access to <b>information and resources</b> to help families find the care they need</li> <li>• Greater opportunities to <b>lead and advocate</b> at all levels of the system</li> </ul>
<b>Providers</b>	<ul style="list-style-type: none"> <li>• More <b>funding and resources</b> to compensate and support the professional growth of educators</li> <li>• Access to more affordable <b>health insurance</b> options</li> <li>• <b>Simplified systems</b> to reduce administrative burdens on programs</li> <li>• Greater <b>enrollment and program operations support</b> to enable efficiencies and stability</li> <li>• <b>Facilities funding</b> and incentives for addressing unmet needs, accessible by all types of programs</li> </ul>
<b>Communities</b>	<ul style="list-style-type: none"> <li>• <b>Representation of all local stakeholders</b> to ensure that families, providers, local municipalities, schools, businesses and community leaders have a voice</li> <li>• <b>State-wide local governance structures</b> to efficiently and equitably allocate resources based on the specific needs of a community</li> <li>• Access to <b>accurate and timely local information</b> to make informed decisions that help communities thrive</li> </ul>

# Blue Ribbon Panel Plan Goals

---

## Goal 1

**Workforce**: Invest in and support the retention and recruitment of a professional, high-quality ECE workforce

## Goal 2

**Equitable Access**: Increase affordable access that meets the range of family needs and prioritizes under-resourced groups and communities

## Goal 3

**Families and Community Voice**: Elevate family and community voice to develop an equitable and responsive ECE system

## Goal 4

**Systems and Funding**: Build a high-quality and well-funded ECE system that maximizes current resources, supports economically viable programs, and is poised to efficiently leverage future investment

# Workforce

**Goal 1:** Invest in and support the retention and recruitment of a professional, high-quality ECE workforce

## Objectives

**Objective 1A:** Invest in and promote policies that support the professional compensation of early childhood educators in centers, FCCs, and schools

**Objective 1B:** Pursue strategies that support worker recruitment and retention, and build education and training programs for skilled, diverse ECE educators and staff (e.g., apprenticeships, high school CDA, retraining from other fields)

**Objective 1C:** Adopt a three-step career ladder that aligns with the Unifying Framework and links career advancement with compensation, following an implementation timeline and stakeholder input process that ensures any new system supports all providers

**Objective 1D:** Create and expand successful strategies to support educators in increasing the quality of early childhood programs

# Equitable Access Objectives

**Goal 2:** Increase affordable access that meets the range of family needs and prioritizes under-resourced groups and communities

## Equitable Access Objectives

**Objective 2A:** Expand affordability for low and middle-income families, committing to expanding Care 4 Kids eligibility to households earning up to 100% of State Median Income (SMI) over 3 years and phasing in a parent co-pay level of a maximum of 7% of family income (TBD)

**Objective 2B:** Increase equitable access to high-quality programs to meet the needs of children and families, especially for infant/toddler care, children with special needs, and under-resourced families and communities (e.g., incentives for expanding infants and toddler slots, contracted infant and toddler slots, Smart Start, facility funding)

# Discussion Break – 25 mins

---

Question 1	What resonates with you?
Question 2	Are there any recommendations that you feel need more consideration or clarification?
Question 3	Which recommendations are you most excited about?

# Families and Community Voice Objectives

**Goal 3:** Elevate family and community voice to develop an equitable and responsive ECE system

## Family and Community Voice Objectives

**Objective 3A:** Recognize, empower, and embed families as central and valued decision-makers in the development of an equitable ECE system

**Objective 3B:** Expand and fund community-informed governance with regional supports that utilizes a common needs assessment for an equitable and responsive ECE system

# System and Funding Objectives

**Goal 4:** Build a high-quality and well-funded ECE system that maximizes current resources, supports economically viable programs, and is poised to efficiently leverage future investment

## System and Funding Objectives

**Objective 4A:** Simplify state-funded system and better align with federal systems to reduce complexity and increase utility for providers, families, and the state

**Objective 4B:** Assess true cost of quality care and develop a plan to transition to funding based on this true cost, starting with infant and toddler care and high need communities

**Objective 4C:** Maximize existing resources by strengthening programs and partnerships to improve enrollment and reduce administrative burdens and redundant costs

**Objective 4D:** Develop data and information systems, including a provider and parent portal and navigation systems, to track and improve systems and outcomes

**Objective 4E:** Develop a flexible fiscal model to support implementation and help to prioritize and stage investments

**Objective 4F:** Identify new funding streams that will support sustained and significant incremental investment in ECE

# Discussion Break – 25 mins

---

Question 1	What resonates with you?
Question 2	Are there any recommendations that you feel need more consideration or clarification?
Question 3	Which recommendations are you most excited about?



# Next Steps

---

## Looking Ahead

---

Next steps for reviewing and finalizing plan recommendations:

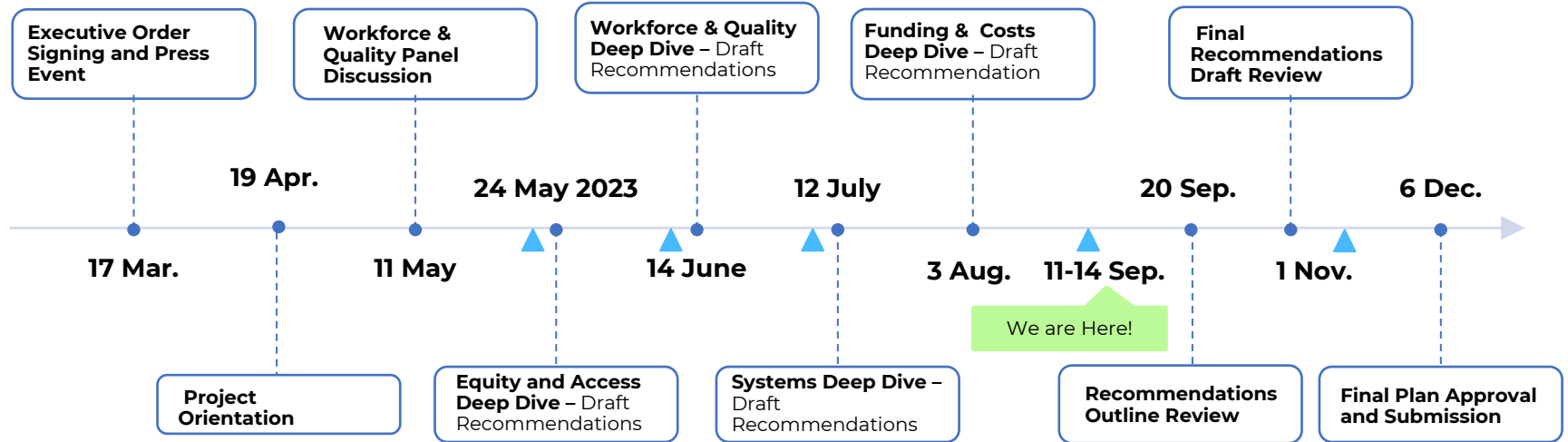
- **Sept 20th:** Blue Ribbon Panel Meeting to review outline and suggest revisions
- **Sept 30th:** Deadline for feedback on draft plan outline
- **Nov 1st:** Blue Ribbon Panel Meeting to review draft of final report contents
- **Dec 6th:** Blue Ribbon Panel submits plan to Governor's Office

*We are grateful for your partnership! It is vital that we work together to strengthen ECE in our state.*

*Please check out the [Blue Ribbon Panel website](https://www.ctoec.org/blue-ribbon-panel) for more information and share any questions or feedback on the outline by September 30<sup>th</sup> using this link: [www.ctoec.org/blue-ribbon-panel/feedback](https://www.ctoec.org/blue-ribbon-panel/feedback)*

# *Appendix*

# Blue Ribbon Panel Timeline



The recommendations presented today are considered **preliminary**; they will be discussed and updated by the Blue Ribbon Panel and then **further socialized with the field** before they are considered "final"

▲ Indicates Public Listening Sessions For Collecting Feedback from the Field